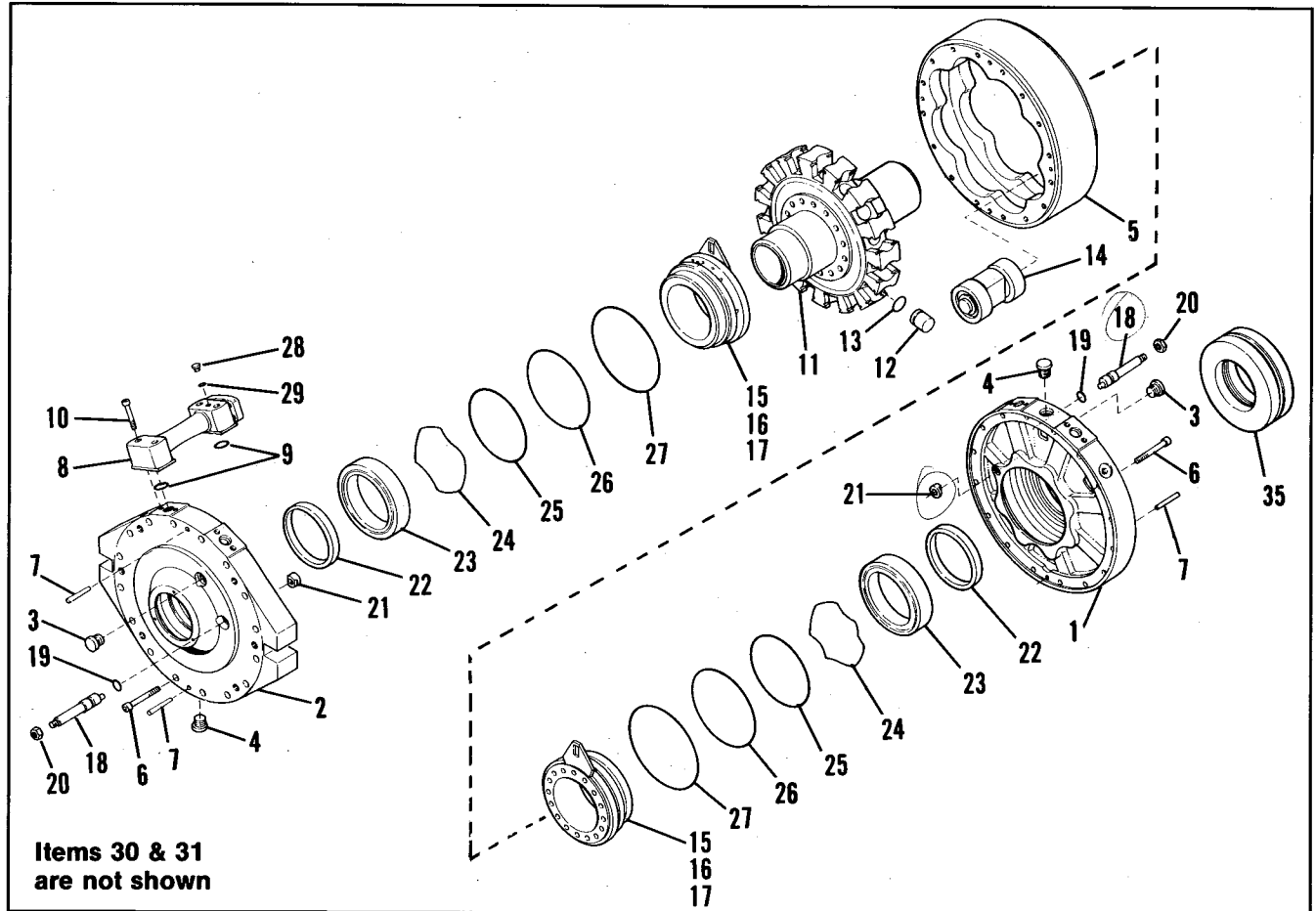


PARTS BREAKDOWN AND DRAWING



SPARE PARTS LIST

Item	Description	Qty	Item	Description	Qty
1	Side Cover - A	1	17	Rivet	6
2	Side Cover - B	1	18	Adjustment Pin	2
3	Port Plug	2	19	O-Ring	2
4	Port Plug	1	20	Hexagon Nut	2
5	Cam Ring	1	21	Thrust Washer	2
6	Socket Head Cap Screw	32	22	Shaft Seal	2
7	Tapered Pin	4	23	Main Bearing	2
8	Oil Distribution Manifold	2	24	Spring Washer	2
9	O-Ring	4	25	O-Ring	2
10	Socket Head Cap Screw	8	26	O-Ring	2
11	Cylinder Block	1	27	O-Ring	2
12	Piston	15	28	Port Plug	2
13	Piston Ring	15	29	O-Ring	2
14	Crosshead Assembly	15	30	Seal Cover	2
15	Oil Distribution Ring	2	31	Hex Head Cap Screw	12
16	Adjustment Plate	2	35	Shrink Disc Coupling	1

NOTES - Item 15 consists of items 15, 16 and 17.

- Items 30 & 31 pertain only to motors 455 thru 1100.